

# Harnessing the power of **Digital Twins** in **plastics** production

**Christos Adamopoulos**



**EPICOR**  
Authorised Partner



# ● ATC at a glance

Active since  
**1987**

Integrated IT  
solutions

Since **2001**  
Specialized solutions  
for **Manufacturing**

Smart  
Business  
Enabler



**EPICOR**  
Authorized Partner



**EPICOR**  
Authorized Partner

## Epicor customers make, move, and sell more

- Specialized for discrete, make to order manufacturing
- Aggregate, transform, and apply data for improved operational performance

**+39%**  
Manufacturing  
accuracy

**+21%**  
Warehouse  
productivity

**+32%**  
Point-of-sale  
accuracy



**~20K**  
clients

**~€1 billion**  
annual revenue





# Advanced MES Choice through Knowledge of data



**EPICOR**  
Authorized Partner

# Purpose -built solution for Plastics

Collect your data  
**automatically**  
and take action!

No need of  
extensive  
consulting

Short  
ROI

Increase  
productivity



**EPICOR**  
Authorized Partner

# What is Advanced MES?

A **digital twin solution**  
for those who are seeking **how to**

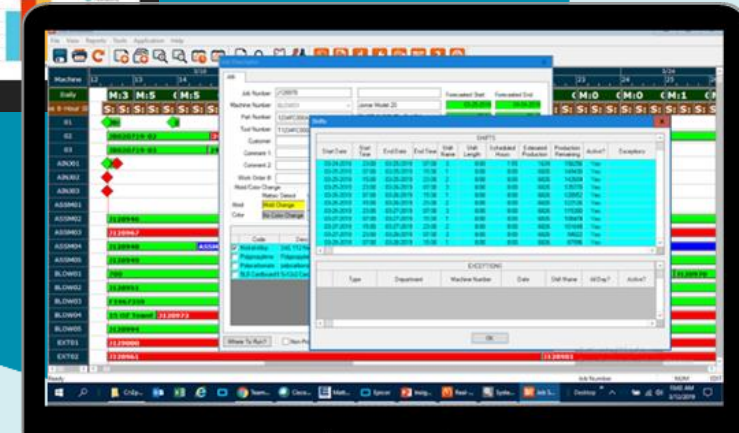
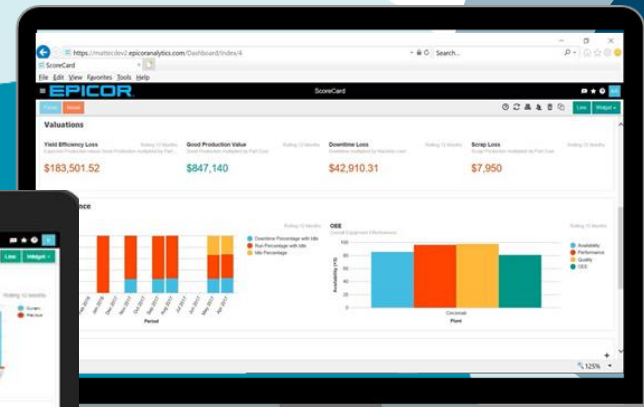
make more  
parts without  
more assets

improve  
production  
execution &  
performance  
efficiency

gain a  
competitive  
advantage

# Value for your business

- Increased plant productivity
- Optimized Production Processes
- Quality Control
- Traceability and Compliance
- Real-time Reporting and Analysis
- Integration with Supply Chain

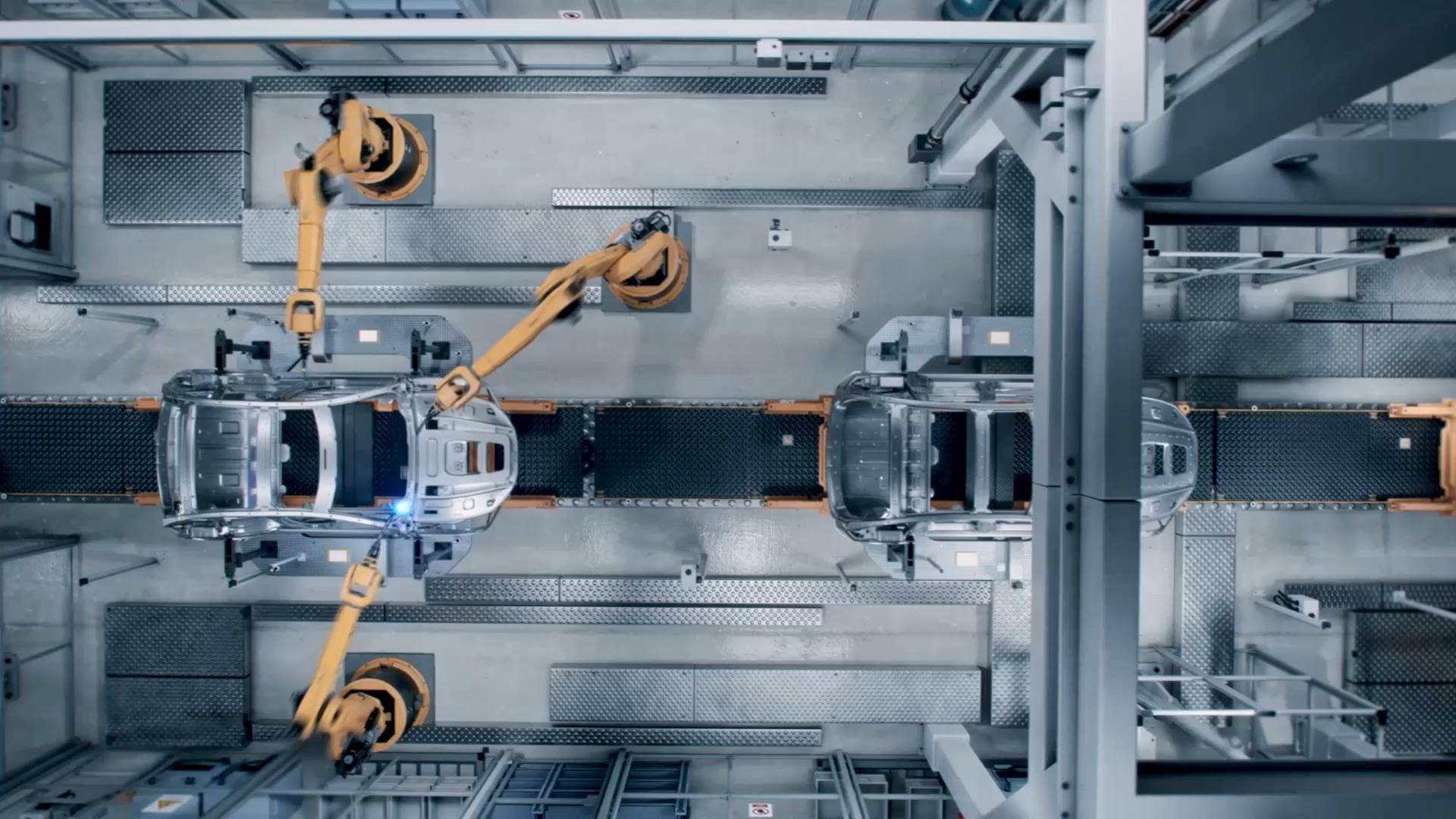


# ..but of course you need more

- Automated alerts, messaging and escalation everywhere (office, mobile and global)
- Lower utility bills & Improved cost of goods sold
- Reduce emission of pollutants
- Automatic change of tools & molds
- Identify trends, patterns and opportunities for optimization







# Epicor Advanced MES

**37 countries**  
doing business

**>36K users**  
worldwide

**250+**  
Machines Largest Install

**15K+**  
Connected Machines



**Rubber & plastics**



**Fabricated Metals**



**Industrial equipment**




**Automotive**




**High tech & Electronics**




# Advanced MES & Kinetic | An important piece of any Smart Factory

 Service and Asset Management

 Production Management

 Supply Chain Management

 Planning and Scheduling

 Project Management

 Product Management

 Sales Management


 Customer Relationship Management

 Financial Management



 Business Intelligence and Analytics

 Global Business Management

 Governance, Risk, and Compliance

 Cloud Business Platform



# Epicor Advanced MES in numbers

Clarios case study

**“We used to run 3-4% scrap. Last month we were down to 1.37%. You can’t get much better than that; that’s world-class and is largely attributable to Epicor Advanced MES. It’s the tool that gives us the numbers we need to make good decisions.”**

Dave Rose | Quality Engineer



**Scrap to 1.37%**

-23% start-up scrap  
-27% running scrap in 7 years



**-3.1%  
machine downtime**



**-13%  
Cost to make each unit  
(conversion)**



**-50%  
changeover time**



**+8%  
productivity**



**-600K\$  
annual quality cost**



“The jump in efficiency from 66.47% to 94% is amazing. Epicor Advanced MES integrated with Kinetic played a key role in informing us of the ways we could improve, which drove that impressive outcome.”

Johnson Zhu | IT Director

# Epicor Advanced MES in numbers

Custom Molded  
Products case study



## 2x efficiencies

Automated workflows  
Decision making on real-time data



**+33%**  
**Overall Equipment  
Effectiveness (OEE)**



**+50%**  
**Sales volume in 3 years**  
(despite lockdown)



**-58%**  
**Single Minute  
Exchange Dies (SMED)**



“Today, every customer wants as many parts as quickly as possible. Many of our installed base customers have increased their volume from 15% to as much as 30%. We grew overall by 40% in 2021 and are already on track to increase by 70% in 2022. Epicor Advanced MES definitely contributed to that success.”

Patrick Austin | Chief Financial Officer

# Epicor Advanced MES in numbers

Midwest Precision  
Molding case study



**Minimized downtime**  
Due to proactive maintenance



**+20%**  
efficiencies



**On top of demand**  
Jobs prioritized



**+55%**  
employees



**Stay on top**  
through the pandemic



**+70%**  
overall growth



# Contact us



## Online

[www.atc.gr](http://www.atc.gr)

[epicor.sales@atc.gr](mailto:epicor.sales@atc.gr)



## Telephone

+30 210 6874300



## Social Media



 Smart Factory in Greece

 Athens Technology Center

 Athens Technology Center - software house

The background features three overlapping circles of different shades of blue and teal. The largest circle on the left is a dark teal. A medium-sized circle in a dark navy blue overlaps its right side. A large circle in a bright cyan overlaps the right side of the dark navy blue circle. The text 'Thank you!' is centered within the dark teal circle.

Thank you!